



2000 Monitoring Workshop
Integrating Conservation Management and Monitoring
Barcelona, Spain, 19 - 21 October 2015

Conservation Status and Natura 2000 - a link to make

Angelika Rubin
European Commission, DG ENV.B3

Structure of presentation

1. *Conservation status*
2. *Main results of latest "State of Nature" report*
 - a) General
 - b) Pressures & threats
 - c) Natura 2000
3. *Conservation status & consideration at site level*
 - a) Advantages
 - b) Current discussions

Conservation Status

- 1. Favourable CS is the overall objectives of the Habitats Directive*
 - Sufficient area and quality of habitats
 - Sufficiently large populations & habitats for species
 - Includes 'future prospects'
- 2. Beyond Natura 2000*
- 3. Focus of 6-yearly reporting*

Information required for assessing conservation status

Habitat	Species
Range	Range
Area	Population
Structure & Functions	Habitat for species
Future prospects	Future prospects

Period...

2007-2012

Group...

Grasslands

Name...

6170 Alpine and subalpine calcar

Bio-region...

Alpine

Filter

View data sheet info

Audit trail

Map

Note: Rows in italic shows data not taken into account when performing the assessments (marginal presence, occasional, extinct prior HD, information, etc)

Legend: **FV** Favourable **XX** Unknown **U1** Unfavourable-Inadequate **U2** Unfavourable-Bad

Current selection: 2007-2012, Grasslands, 6170 Alpine and subalpine calcareous grasslands, Alpine. [Show all Grasslands](#)

Treated data from Member States reports

MS	Range (km ²)				Area				Struct & func.	Future prosp.	Overall asses.				Areas from gridded maps(km ²)			
	Surface	% MS	Trend	Ref.	Surface	% MS	Trend	Ref.			Curr. CS	Qualifier	Prev. CS	Nat. of ch.	Range	% MS	Distrib.	% MS
AT	51000	25.5	0	≈51000	2000	20.3	x	≈2000	U1	U1	U1	x	U1	nc	46400	25.6	37600	27
BG	3100	1.5	x	3100	25.58	0.3	x	25.58	U1	U1	U1	=	N/A		3100	1.7	2100	1.5
DE	4046.46	2	0	4046.46	280	2.8	0	280	FV	U1	U1	=	U1	nc	5900	3.3	3300	2.4
ES	12677	6.3	0	≈12677	491.84	5	x	>491.84	XX	FV	U1	x	XX	cl	8700	4.8	7000	5
FR	37200	18.6	0	≈37200	1000	10.2	0	≈1000	FV	FV	FV		FV	nc	30300	16.7	24200	17.4
IT	46000	23	0	≈46000	2701.66	27.4	0	≈2701.66	FV	FV	FV		FV		39700	21.9	39700	28.5
PL	1005	0.5	0	≈1005	15	0.2	0	≈15	FV	FV	FV		FV	nc	1500	0.8	600	0.4
RO	4300	2.1	0	≈4300	2100	21.3	0	≈2100	FV	FV	FV		N/A		4300	2.4	2100	1.5
SE	36200	18.1	0	36200	1120	11.4	0	1120	FV	FV	FV		FV		36200	19.9	17200	12.4
SI	2573	1.3	0	≈2573	106.60	1.1	0	≈106.60	FV	FV	FV		FV	nc	3100	1.7	3100	2.2
SK	2258.58	1.1	0	>2258.58	7.95	0.1	0	≈7.95	FV	XX	U1	=	U1		2300	1.3	2300	1.7

Automatic Assessments

Show

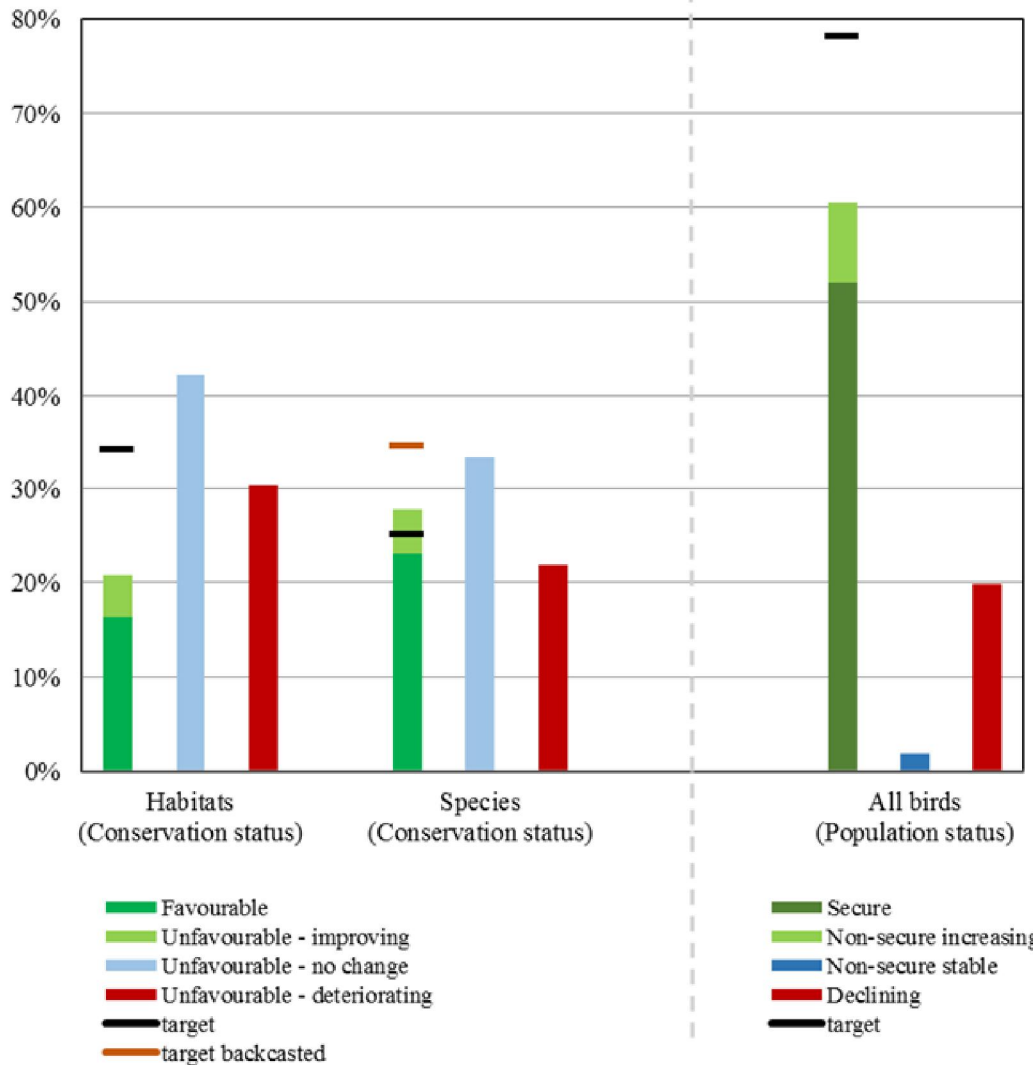
EU Biogeographical assessment and proposed corrections

MS/EU27	Surface	Range Concl.	Trend	Ref.	Surface	Area Concl.	Trend	Ref.	Struct. func.	Future prosp.	Curr. CS Concl.	Qualifier	Prev. CS Concl.	Nat. of ch.	Target 1		
															Contrib.	Type	
EU27	200360	1	0	>200360	9849	1	x	>9849	2XA	2XA	MTX	x	U1	nc	D	=	0/0 EEA-ETC/BD
EU27	200360	2XR		200360	9849			9849				N/A	U1				0/2 Ulrike Rath

You do not have permission to add conclusions.

“State of Nature in the EU” Report 2015



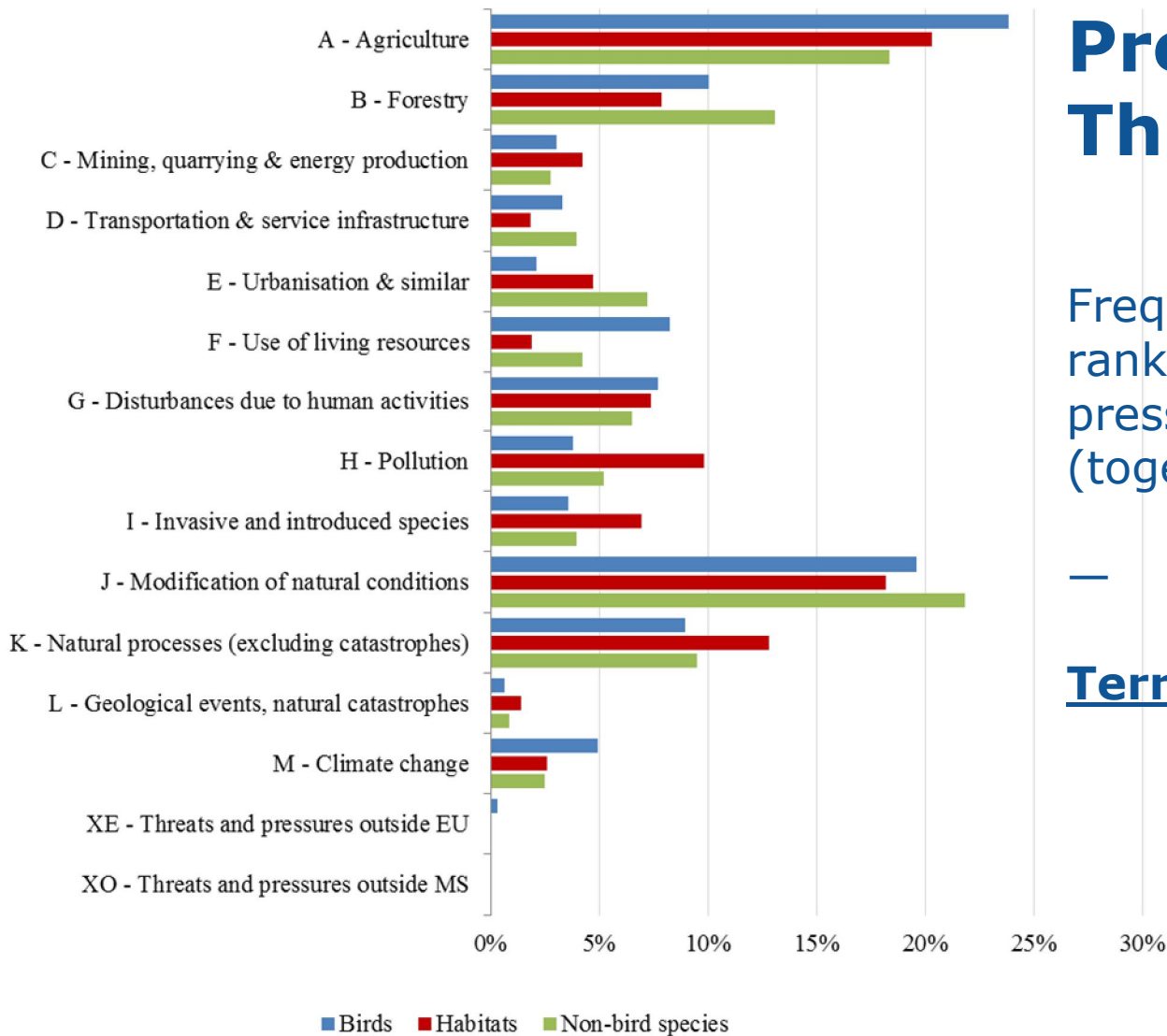


Main results

The May 2015 'State of Nature in the EU' report showed

- Small improvements
- Continued declines

Unless there is a significant improvement of trends, the target 1 of the Biodiversity strategy will not be achieved

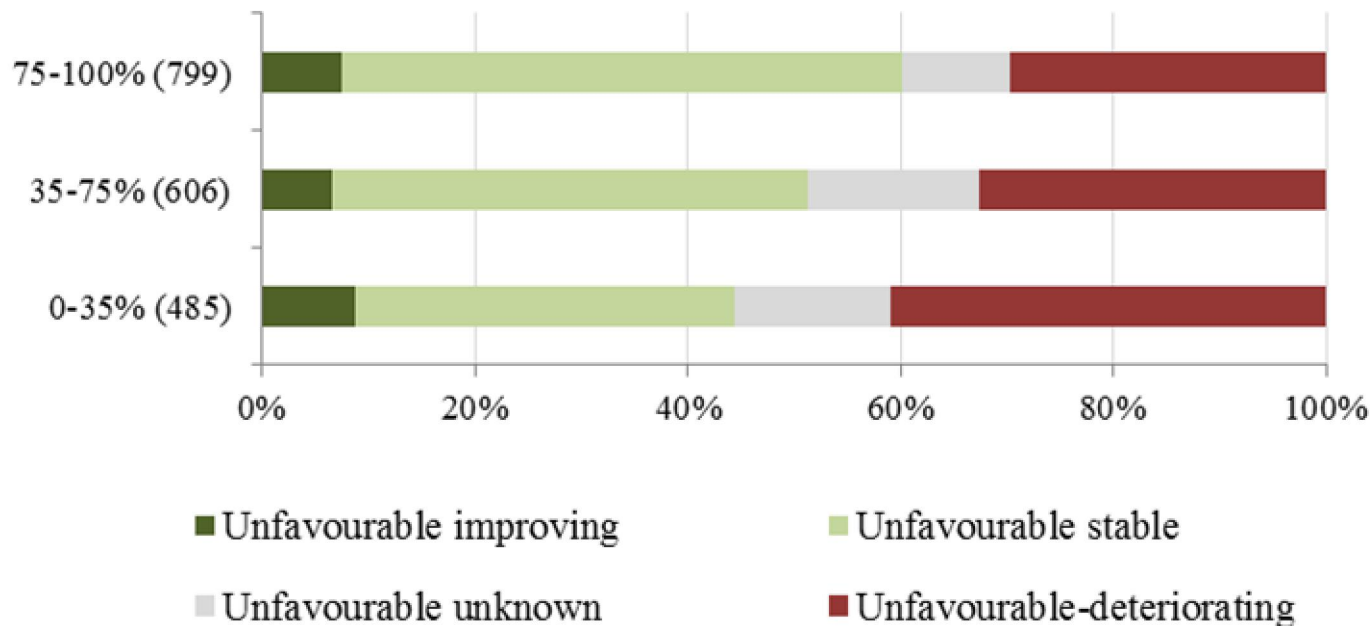


Pressures & Threats

Frequency (%) of high ranked level 1 pressures and threats (together)

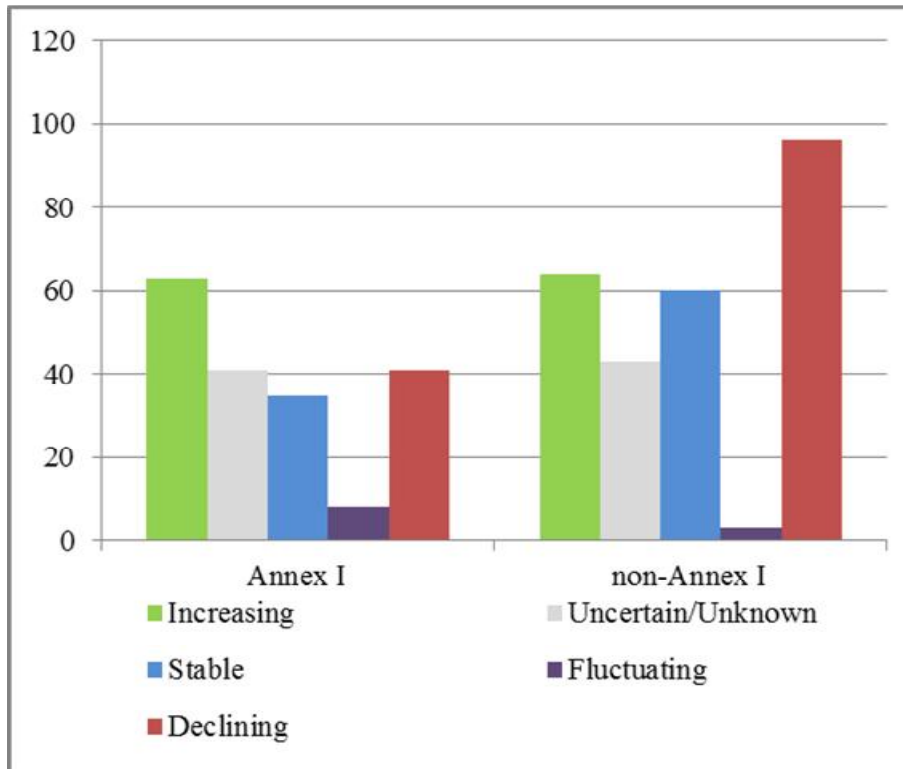
Terrestrial

The Role of Natura 2000 - SACs



Trends in the conservation status of **Annex I habitats** assessed by MS as unfavourable (for habitats with more than 75 %, 35-75 % and less than 35 % of their area covered by Natura 2000)

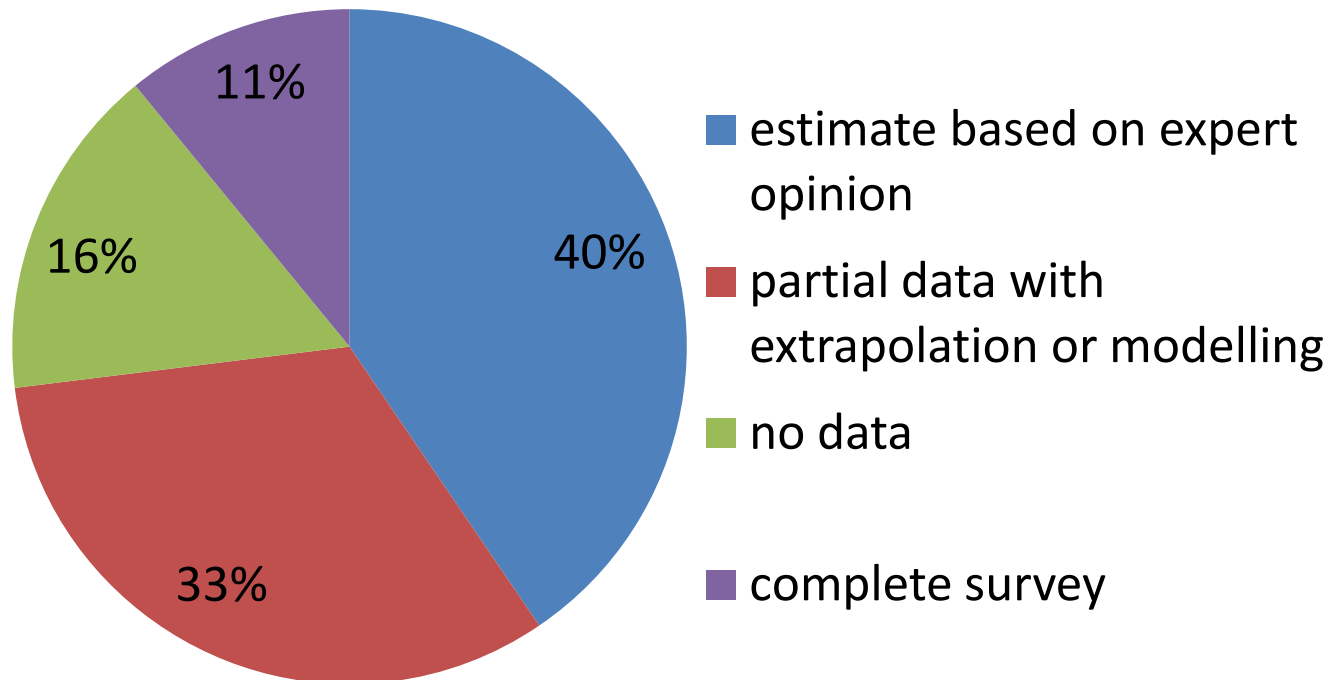
The Role of Natura 2000 - SPAs



For many habitats and species, changing management to Natura 2000 sites can have a major impact on regional Conservation Status

Long-term (since 1980) breeding population trend (%) by Annex (Annex I versus non-Annex I species)

Method used to estimate trend in cover for habitats



Conclusions

- Improvement in knowledge (“unknowns” halved)
- Success-stories where measures implemented on sufficient scale
- Indications that Natura 2000 is working
- Agriculture & man made hydrological changes are top pressures in the terrestrial, over-exploitation and pollution in the marine ecosystem
- Insufficient progress in introducing conservation objectives and measures for the Natura 2000 sites (only 50% have management plans)



Considering conservation status in Natura 2000 management

Consideration of favourable reference values and appropriate levels of wild bird populations in SAC and SPA management

"However, in most cases there is no coordinated approach to ensure that SACs and SPAs are adequately contributing to national objectives at national level"

Natural England Commissioned Report NECR176 by IEEP

More focus on achieving FCS is needed

- ... work jointly towards FCS for an increasing number of features the coming years.
- ... using CS / Art.17 information for framing the necessary objectives and measures
- considerations made could be used in particular to inform
 - a) *the further development of the Natura 2000 biogeographic process and*
 - b) *the setting of conservation objectives and measures for Natura 2000 sites*

Advantages

- Easier identification of implementation priorities and measures
- Strengthened cooperation and exchange on monitoring, strategies and measures for species/habitats beyond national borders
- Improved and more robust knowledge on status, trends and conservation needs

Current discussions - focusing further work on FCS

1. Natura 2000 biogeographical process
2. Work in the frame of the Reporting Review on
 - ... favourable reference values (contract)
 - ... structure & functions, future prospects
3. Work on financing, in particular ...
 - ... updating and Improving PAFs
 - ... implementing LIFE Integrated Projects

**Keep conservation status on your
mind!**

Thank you for your attention!!!

Useful links:

http://ec.europa.eu/environment/nature/knowledge/rep_habitats/index_en.htm

http://ec.europa.eu/environment/nature/knowledge/rep_birds/index_en.htm