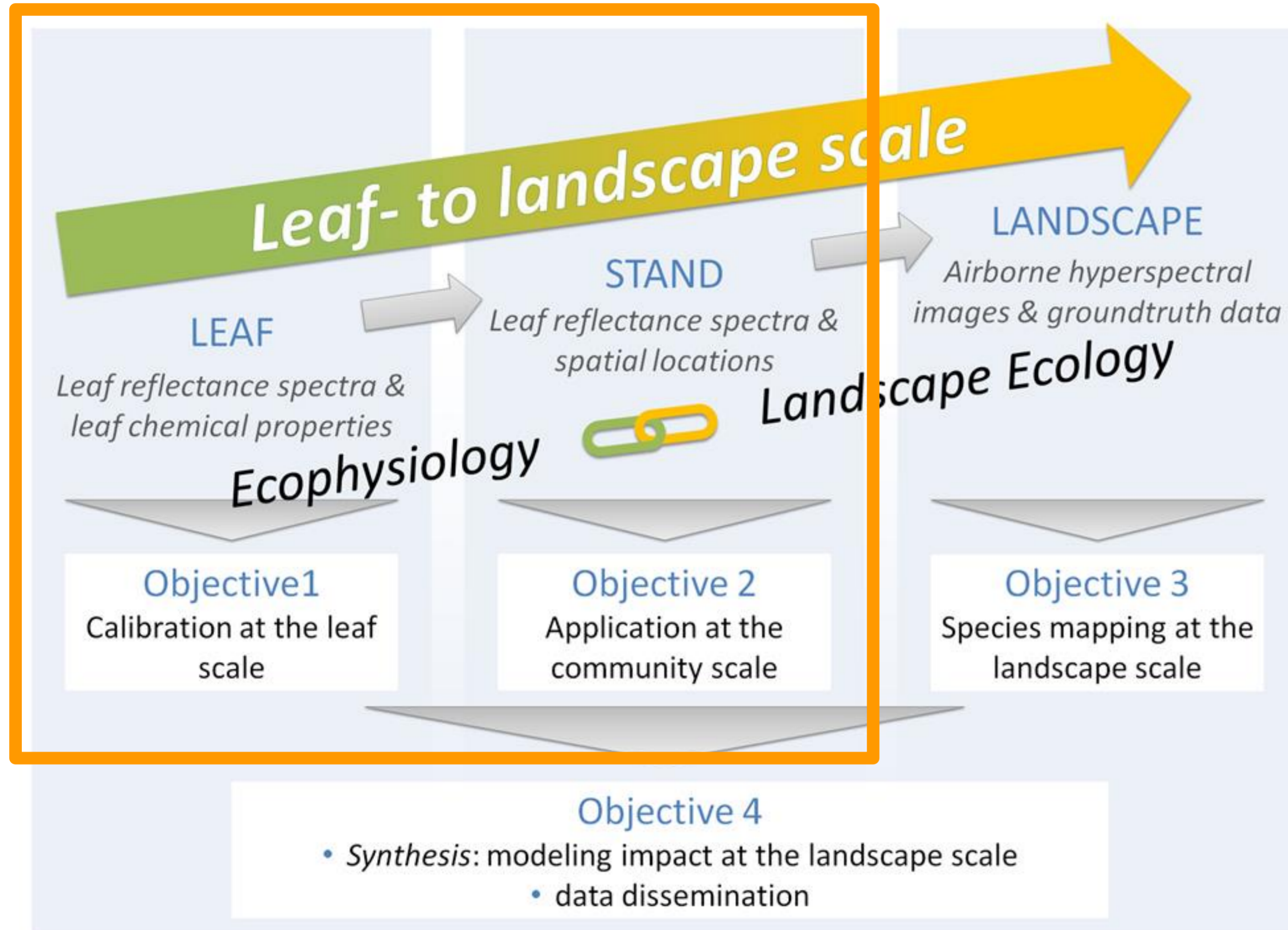


Monitoring of an invasive tree species at a Mediterranean coastal dune site Distinguishing *Acacia longifolia* at leaf and canopy scale

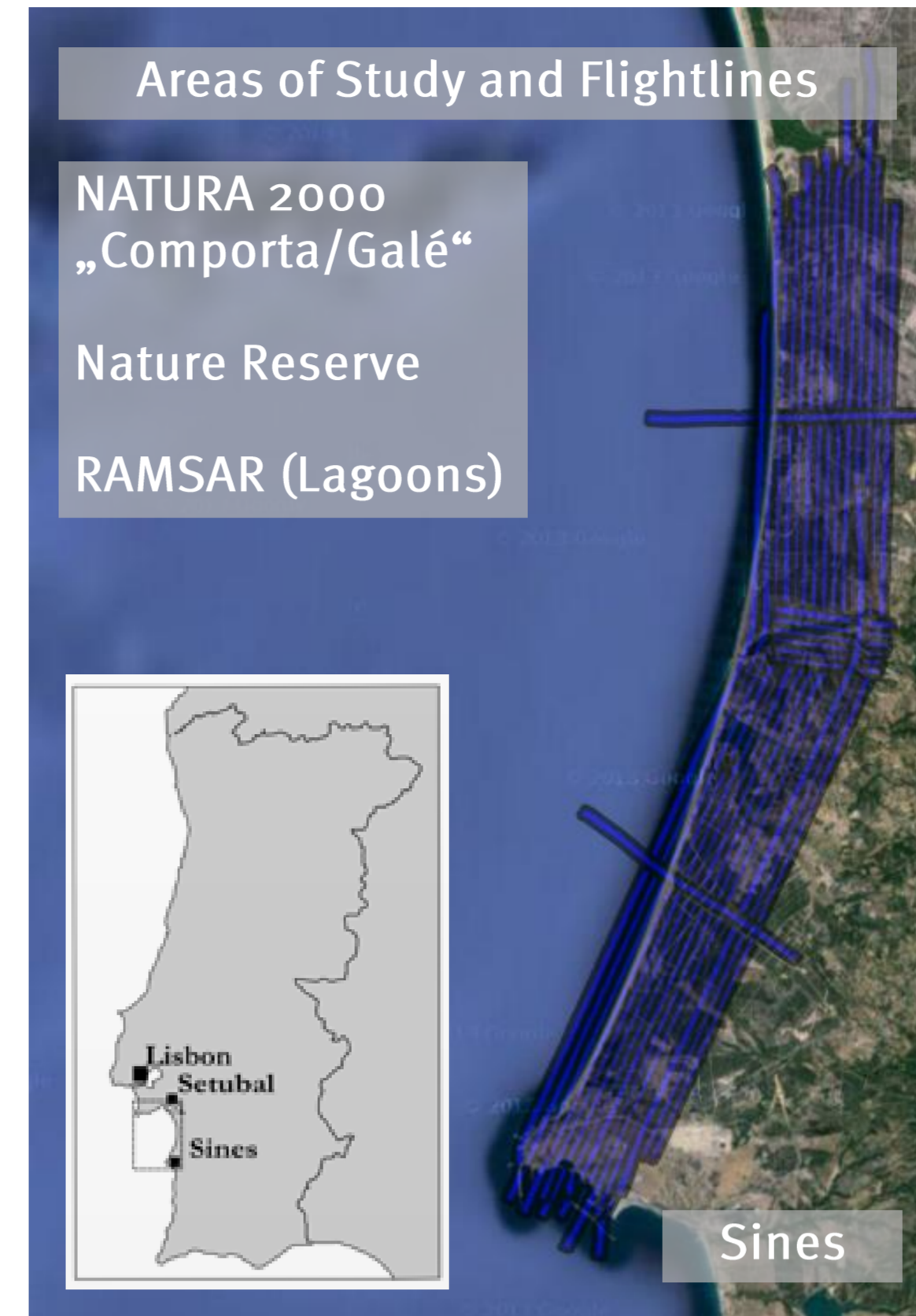
Große-Stoltenberg A¹, Werner C², Thiele J¹, Hellmann C^{2,3}, and Oldeland J⁴

Introduction & Aim of the Study

The aim of the study is to test if the non-native, invasive tree *Acacia longifolia* can be distinguished from adjacent vegetation based on leaf and canopy field hyperspectral data. Two approaches will be compared: using (1) full spectrum data and using (2) vegetation indices and red-edge parameters.



Area of Study & Data



Study Site

- NATURA 2000 site “Comporta/Galé” in South-West Portugal
- Mediterranean dune ecosystem with problematic invasive *Acacia* species

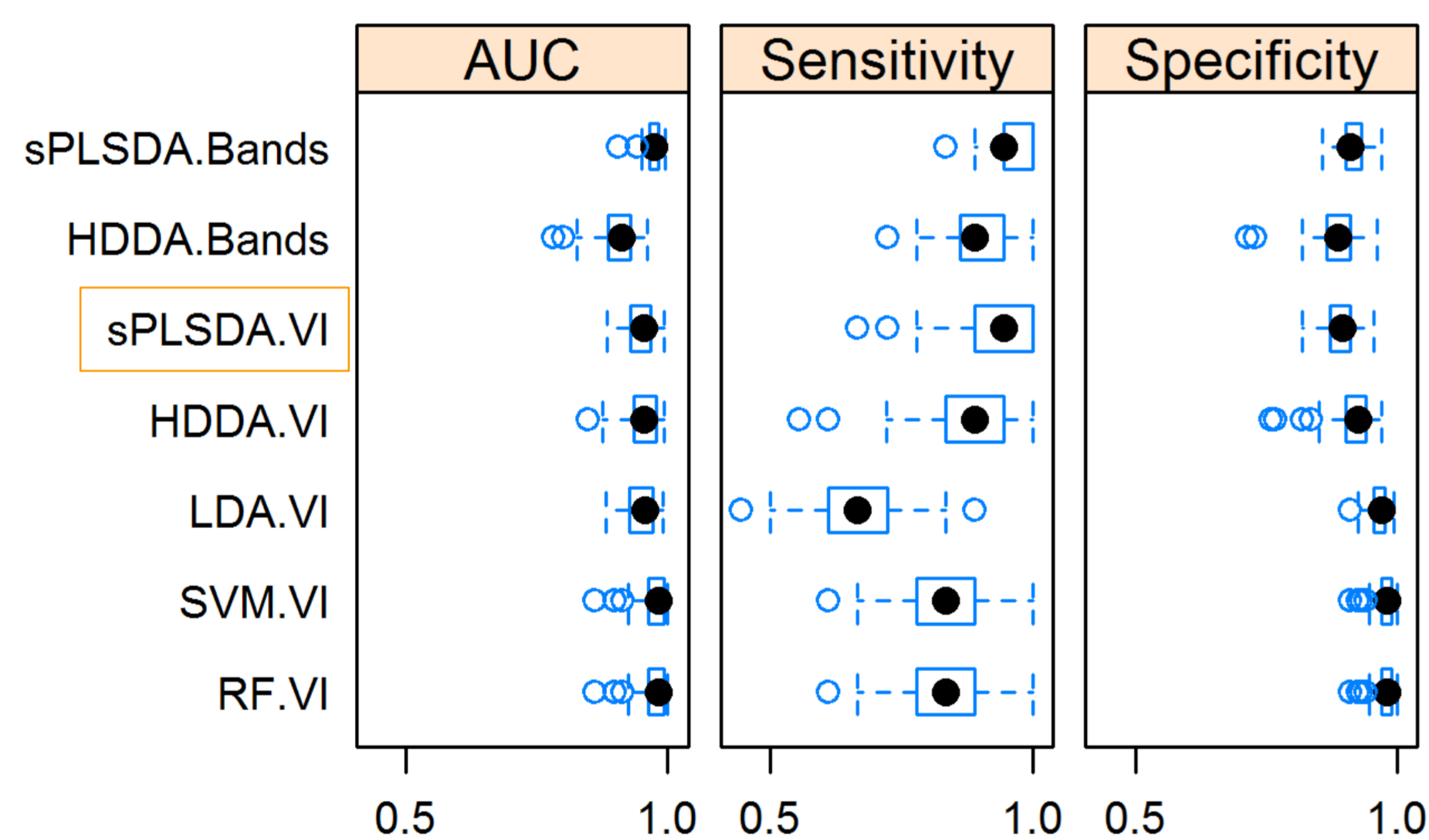
Field Sampling

- Data: Full range (350 – 2500nm) ASD FieldSpec data
- Sensor: contact probe at leaf level and bare fibre at canopy level
- Species: native and exotic shrubs and trees including *Acacia longifolia*
- Dates: April 2011 and April 2014

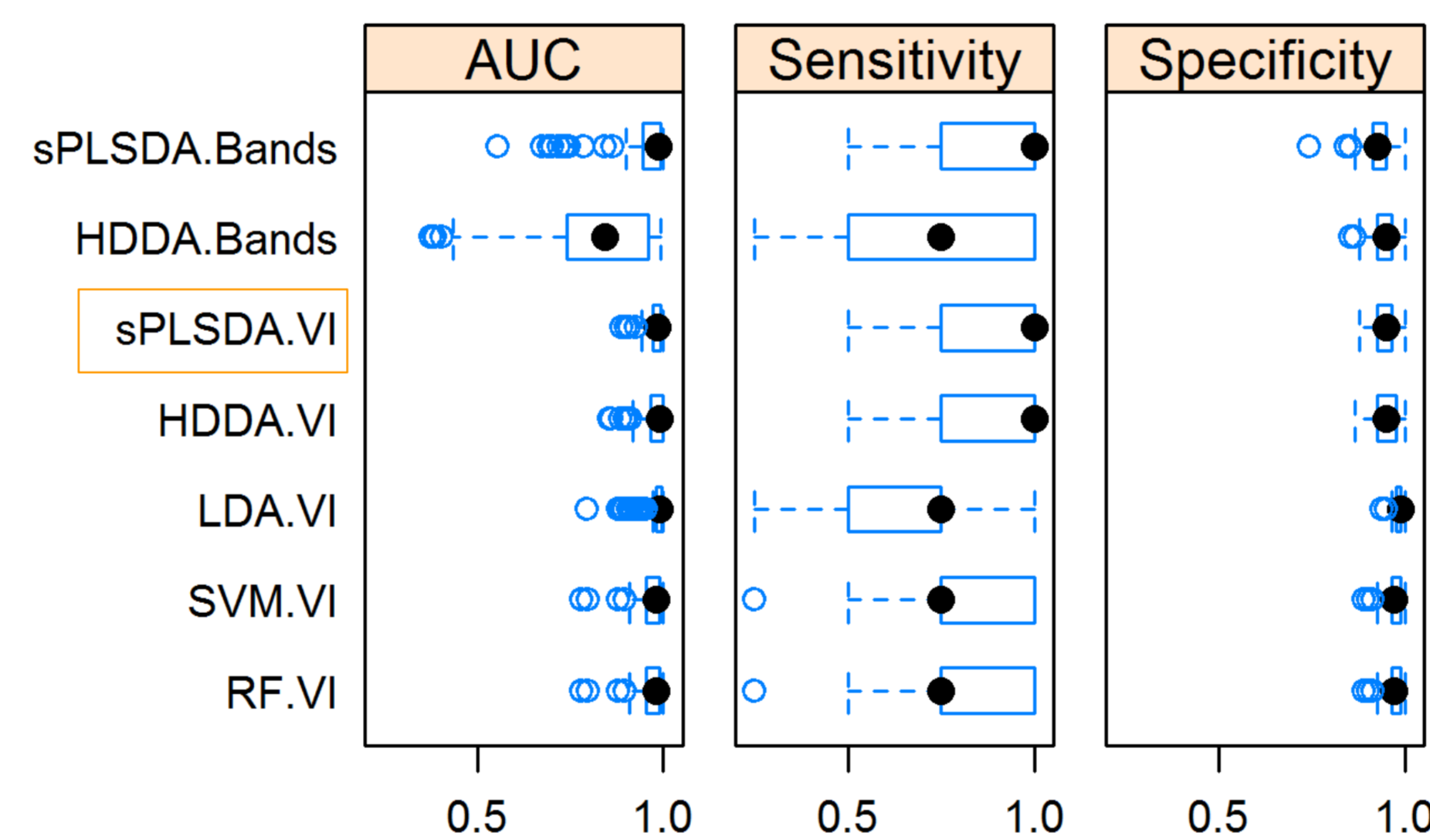


Results

Leaf Spectra: 2011 and 2014



Canopy Spectra: 2011 and 2014



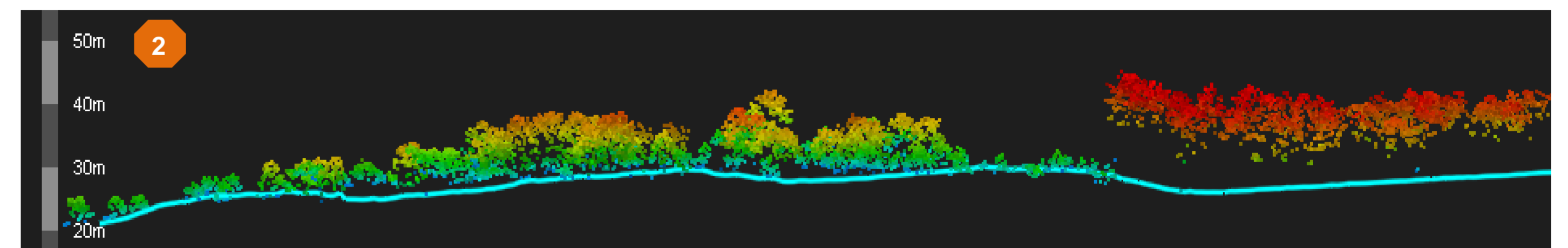
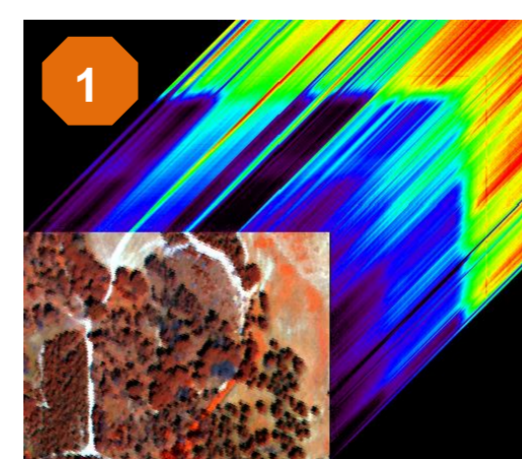
Model Performance: Distinguishing *Acacia longifolia* from adjacent vegetation using hyperspectral full range (*.Bands) and vegetation index (*.VI) data comparing 5 algorithms

Conclusions

- (1) The target species *Acacia longifolia* can be distinguished from all other shrub and tree species across the years at leaf and canopy level.
- (2) Using Hyperspectral Vegetation Indices combined with the sPLS algorithm (“sPLSDA.VI”) is a promising approach in terms of model performance, model stability, computing efficiency and interpretability.
- (3) Identifying *A. longifolia* at field canopy level gives strong indication for discrimination potential using high-resolution airborne data.

Outlook

The separability of *A. longifolia* at landscape level will be tested joining airborne 1 hyperspectral and 2 LiDAR data together with hyperspectral and biochemical field data. This will generate a distribution basemap for impact assessment.



Acknowledgements

Funding
DFG (QUEEN, OL 417/1-1, TH 1295/4-1, WE 2681/8-1)
EUFAR (DelnVader, EUFAR11-06)
FP7 Marie Curie IRSES “INSPECTED.NET”
DAAD (Field Studies A. Große-Stoltenberg)
Studienstiftung des Deutschen Volkes (Fellowship C. Hellmann)

DAAD DFG

EUFAR
Studienstiftung
des deutschen Volkes

Many thanks to P. Burai, L. Csaba, J. Lehmann, J. Böhmichen, J. Lülting for assistance in the field, and M. Appelt for IT support. We also would like to thank the ICNF Portugal and the Estabelecimento Prisional de Pinheiro da Cruz (EPPC), Portugal, for granting site permission, and Prof. Cristina Máguas (University of Lisbon) as well as the EPPC for logistic support.



References

Lehmann J.R.K., Große-Stoltenberg A., Römer M., Oldeland J. (2015). Field Spectroscopy in the VNIR-SWIR Region to Discriminate between Mediterranean Native Plants and Exotic-Invasive Shrubs Based on Leaf Tannin Content. *Remote Sens.*, 7, 1225-1241.

Große-Stoltenberg A., Werner C., Thiele J., Hellmann C., and Oldeland J. (in prep). Comparing continuous VNIR-SWIR spectral information and narrowband hyperspectral indices to discriminate the invasive *Acacia longifolia* from Mediterranean-type dune shrubs and trees at leaf and canopy level.

Natura 2000 Monitoring: Integrating conservation management and monitoring. Eurosite, Barcelona, Spain, 19-21 October 2015